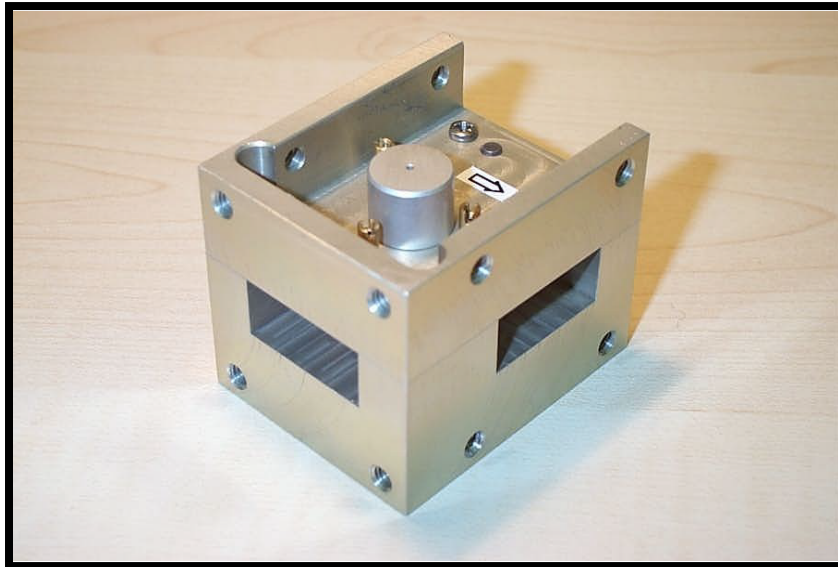




## P-0160 WG16 (WR90) Circulator / Isolator



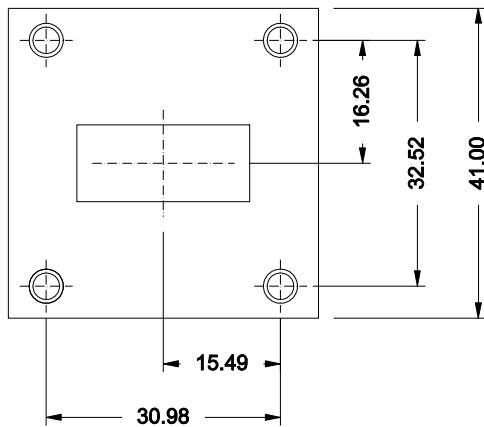
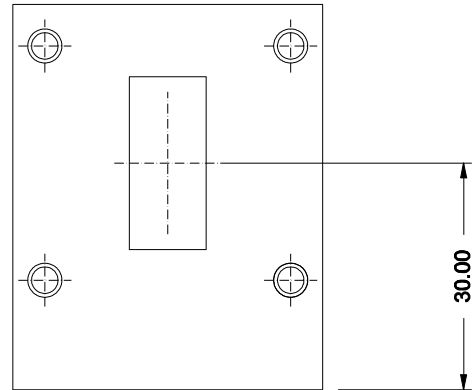
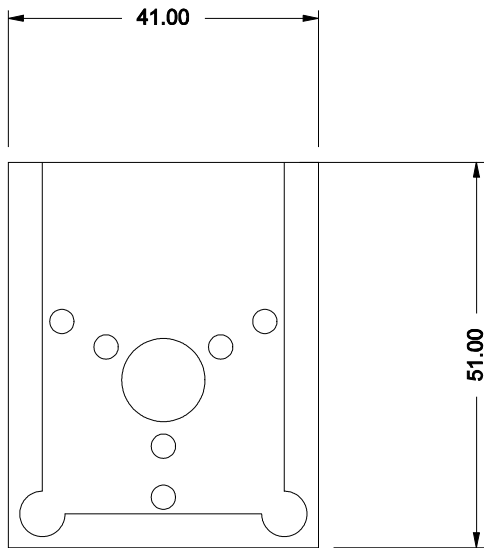
- \* High Performance
- \* 2GHz Bandwidth
- \* 350W CW Power
- \* Custom Flanges

The P-0160 range of WG16 (WR90 / R100) devices offer excellent performance and power handling characteristics. The device can be configured to accept an external termination, typically up to 100W (higher power available), on any of the 3 ports. The standard flange is tapped 8-32 UNC, but metric or clear options are available.

Typical applications include Tx / Rx / Antenna Diplexer and PA output protection.

Frequency Range	8.2 - 12.5 GHz with 2GHz Bandwidth	
<b>Isolation</b>	20dB min.	23dB typ.
<b>VSWR</b>	1.22:1 max.	1.15:1 typ.
<b>Insertion Loss</b>	0.3dB max.	0.2dB typ.
<b>Power Handling</b>	350W CW (Higher power available)	
<b>OTR</b>	-20 to +70 degrees Celsius	
<b>Mating Flange</b>	UBR 100 (Std flange holes 8-32 UNC)	
<b>Size</b>	41 x 51 x 41 mm (nom.)	
<b>Finish</b>	Alocrom 1200	
<b>Weight</b>	105 grams (nom.)	

## P-0160 Waveguide 16 Circulator Mechanical Outline



Scale 1:1 Dimensions:mm